



Industrial Automation Solution Shelter



# CONTENTS

PROFILE

OUR ASSOCIATIONS

WORKING SECTORS

ACTIVITY STEPS TO CREATE SOLUTION

COMMITMENT

OUR TEAM STRENGTH

INFRASTRUCTURES

PRODUCT & SUPPORT PORTFOLIO

OUR EXPERTISE

BREAK DOWN SUPPORT

MAJOR PROJECTS EXECUTED

SOME OF OUR CLIENTS



## PROFILE

We introduce ourselves as one of the Industrial Automation Solution provider since 20 years of dedicated experienced automation engineers and exposure in complete life cycle of the automation industry.

Our core activity for industry is of automation products sales with complete integration of products with commissioning for machine & process requirement as per customer satisfaction.

We have our dedicated engineer team which providing services for the products after sales. We also have our own service center with experienced engineers who provided service as well as repairing facility for the products AC Drive, Servo Drive PLC, SCADA & DCS.

We also design, manufacture, supply and commissioning of automation panels and electrical all type panels i.e. DG Changeovers, PCC, MCC & APFC control panels as per required by the customers confirming to various standards like IP55 & IP65 according to the customer needs.



## OUR ASSOCIATIONS

We are authorized for various MNC as a system integrator under one roof which help us to provide complete solution under one head. MNC who are associated with us are:-



## WORKING SECTORS

Over the years Innovative Controls has successfully designed, implemented and commissioned products and solutions to its OEM and to end-customers in the following sectors:

**Factory Automation**

**Process Automation**

**Retrofitting Automation**



With our innovative development of systems with new upgraded automation products in industry like textile, metals, Pharma, packaging helps to customers to run their plant which are dead due to absolute of technology and products which result to loss of industry for their investment.

In such case we provide valued solution of Industrial controls & process by newly technology of Drives, PLC, and Panels & also in industrial automation system & solutions and SCADA.

Our focus is always for continuous innovation through research and development with vigorously newly Innovative Systems & Automation.

#### **As a core activity for INDUSTRIAL MACHINE & PROCESS AUTOMATION SOLUTION PROVIDER**

We offer a complete product portfolio for protecting & controlling machines & process driven by electric motors. We provide reliable, efficient & user – friendly solutions developed for flow control, HVAC, Material Handling & many more solutions to Textile & other Industries. You will benefit from the unique features based on lots of year's experiences.



**+ SUPPORT AND SERVICE =**  
**Aditya Industech Pvt Ltd**

# ACTIVITY STEPS TO CREATE SOLUTION

We are specialized to support and enhance the bottom line of your business by providing value added services in the Industrial Automation arena. Our technical expertise and domain experts from various process industries can bolster your projects from concept to commissioning. These services are ideal for OEM's, End Customers with large engineering teams and System Integrators.

The major activities of this Business Unit are

**In-depth System Study and Design**

**Hardware selection**

**PLC, HMI, SCADA and communications software generation**

**SW Configuration and Testing**

**Sensor and Instrument Selection**

**Field Device Configuration and Programming.**

**Pre commissioning**

**Commissioning and startup**

**Hand holding during Startup**

**Operator training**

**Creation of System Reference Manual**

We have an immense experience from various Industry Segments. Please refer to our Industry vercticle section to learn more on the type of Industries we serve.



## COMMITMENT

### Our Vision

To be a premium global conglomerate with a clear focus on each business

### Our Mission

To deliver superior value to our customers, shareholders, employees & society at large

### Our Values

Integrity  
Commitment  
Passion  
Seamlessness  
Speed

## OUR TEAM STRENGTH

Projects

5

IT

2

Design

3

Panel  
Department

8

Service  
centre

8

Marketing

5

Support  
& Service

5

Purchase

3

Accounts

4

HR/Admin

3

Logistics

3

So, Support is available 24 \* 7.



## INFRASTRUCTURES

Spread over the expanses, our infrastructure comprises of head office, application engineering and service area. The application-engineering unit is equipped with the latest machineries that can design and develop in variety of configuration while keeping the production cost low. Further, a team of highly qualified and experienced engineers ably supports the department.

## PRODUCT & SUPPORT PORTFOLIO

- Project Engineering
- Site Services
- Industrial Reports
- Robotics
- Special Purpose Machines
- Panel Manufacturing
- Automation Training
- System Up-gradation
- IIoT





## OUR EXPERTISE



Textile &  
Plastic



Packaging



Chemical



Tyre



Food &  
Beverages



Dairy



Pharmaceuticals



Fertilizer



Furnaces



Oil & Gas



Machines



Foundry

## BREAK DOWN SUPPORT

Aditya Industech Pvt Ltd provides services round the clock 365 days for our customer.

- We also maintain critical spares which belong to critical installation bases.
- We also offer preventive maintenance plans/ schedule.
- Wide experiences for repairing of different make drive & PLC products.



## MAJOR PROJECTS EXECUTED

### Dairy, Food and Beverages



- Standardized Solution
  - Pasteuriser Process
  - Powder Plant Process
  - Compressor and Chiller Control
  - Sterilization Process
  - Cattle-feed Solution
  - Cleaning in Process
  - Recipe Control
  - Utility Control
  - MIS Reports
- Complete Dairy Solution
- Paneer Plant
- Shrikhand Plant
- Cheese Plant
- Curd and Lassi Plant
- Continuous Butter Making Machine
- ICE Silos
- Juice and Cold-drink Machines
- Packing Machines

### Chemical & Petrochemicals



- Chemical Process Plant
- Batch Plant
- Continuous Plant
- Ion Exchange Unit
- Distillation Columns
- Electro-Formation Process
- Color and Dyes Plant
- Resin and Solvent Plant.

## Textile & Plastic Industry



- Standardized Solution
  - Line Synchronization
  - Tension Control with Load-cell and Dancer
  - Winder/Un-winder Control
  - Dosing Ratio Control
  - Recipe Control and Management
  - Consumption Reports
  - Medium Range Textile Solution
  - Splice Control
  - Washing Machine
  - Bleaching Machine
  - Merceriser Machine
  - Dye Padder
  - Singing Machine
  - Desize Washer
  - Continuous Linev Machines
  - Printing Machine
  - Laminator
  - Coating Machine
  - Extruder Application

## Glass & Ceramics



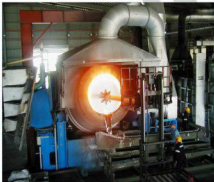
- Batch House
- Glass Furnace
- Glaze Furnace
- Annealing Line
- Printing
- Ceramics Press
- Dual Fuel Upgradation
- IS Machine

## Pharmaceuticals



- API Process
- Formulation Plant
- EMS System
- Water System
- Tablet Machines
  - Granulator
  - Blender
  - RMG
  - Compression, etc.
- Liquid Filling Machine
- Injectable
- 21 CFR Part – 11 Compliant Automation and Reporting systems

## Furnace Automation



- Annealing Furnace
- Glass Furnace
- Metal Furnace
- High Frequency Induction Furnace
- Precious Metal casting Furnace
- BMS with SIL-3 Control System
- Copper Casting Furnace

## Oil and Gas



- Gas Metering and Skids
- Air Separation Plant
- Loading/Unloading Automation
- O<sub>2</sub> & N<sub>2</sub> vaporization System
- Polybutene Extraction
- H<sub>2</sub> Handling

## Material Handling



- Continuous material Conveying
- Batch Plant Automation
- Stacker-Reclaimer Automation
- Pneumatic Conveying Automation
- Crusher
- Palletizer

## Machine Tools



- Tyre Building Machines
- Ply Cutter Application
- Automatic Conveying Line
- Curing Press
- Bearing Machine
- Stamping Machine
- Coating Machine
- Winding/Unwinding Machine

## Water & Waste Water Solution



- Demineralized Water Plant
- Reverse Osmosis Plant
- Effluent Treatment Plant
- UHT
- Sewage treatment plant Automation

## Fertilizers & Pesticides



- Compressor Automation
- Mill Control
- Evaporator
- ESP System
- Ammonia Storage & Handling
- Batch Weighing System
- Soot Blower System
- Boiler Automation
- Dryer Automation

## Power & Energy



- Steam Turbine Automation
- Solar power Plant
- Captive Power Plant
- Hydro Turbine
- Load Shedding and Monitoring System
- Energy management and Protection System
- HRSG System
- Wind Blade Manufacturing Automation
- Transformer Stamping Machine
- Auto Tap Changer

## Panel Engineering



- PLC Panel
- Drive Panel
- Control Panels
- MCC & iMCC Panels
- PCC Panels
- APFC Panel
- RIO Panels
- Operator Console
- Flame Proof Box
- Test Bench
- Purge Panel
- Customized Panel

## Services



- Site Service for Commissioning
- Break Down Services
- Harmonics Analysis
- Cable Management
- Commissioning Support
- AMC Contract

**SIEMENS**

**Rockwell  
Automation**  
 **Allen-Bradley**

## SOME OF OUR CLIENTS



& many more.....





THANK  
YOU!

- Atul Patel (Managing Director) +91 99251 05060: [atul@adityaindia.in](mailto:atul@adityaindia.in)
- Bhanu Patel (Technical Director) +91 99251 05072: [bhanu@adityaindia.in](mailto:bhanu@adityaindia.in)
- Chintan Patel (Sales Director) +91 99251 05064: [chintan@adityaindia.in](mailto:chintan@adityaindia.in)

**Ahmedabad Office:**

B-89, Maruti Industrial Estate,  
Opp. Kirti Tools,  
Phase - I, Vatva G.I.D.C.  
Ahmedabad. - 382 445  
Cell - +91 99251 05064  
+91 99250 05041

**Corporate Office:**

"Aditya House"  
Plot No. 34-B, Rupal Industrial Estate-1,  
Nr. Komal international circle,  
Opp. Manhar Dyg. Bamroli Road,  
Udhna, Surat-394210  
Tel: +91 261 263 3551, +91 90816 33551  
Website - [www.adityaindia.in](http://www.adityaindia.in) | e mail - [info@adityaindia.in](mailto:info@adityaindia.in)

**Vapi Office:**

Shree nath Bhuvan,  
Next to Papillon Restaurant,  
N.H.No. 8, Koparli Road,  
Vapi - 396 191